

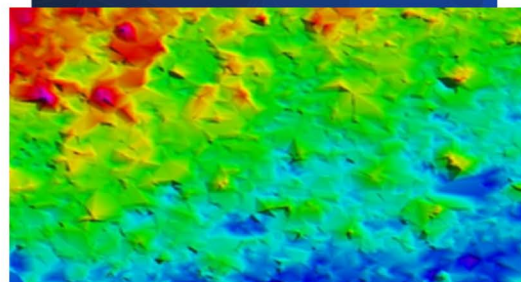
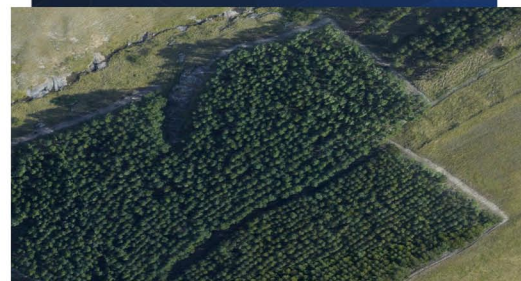
Vegetation Monitoring and Mapping

Southern Mapping is able to provide detailed vegetation monitoring and mapping services through automated feature extraction techniques employed on fused lidar orthoimages with above ground vegetation points, multispectral satellite imagery and airborne hyperspectral imagery. Our unique and diverse data sources allow for several vegetation monitoring and mapping related applications, which include:

- Standard vegetation related land cover mapping
- Vegetation health mapping using infrared imagery well-suited to vegetation rehabilitation monitoring and potential pollution point source detection
- Vegetation species mapping using airborne hyperspectral imagery well-suited to alien vegetation monitoring or baseline environmental vegetation species auditing

About Southern Mapping

Southern Mapping is based in Johannesburg, South Africa. Southern Mapping offers extensive high-accuracy lidar, imagery and remote sensing experience, as well as airborne topographic, hyperspectral, and thermal survey and mapping. We provide mapping services for engineering, infrastructure, mining, mapping, agriculture and environmental sectors in more than 45 African countries. Together with our parent company Woolpert, Inc., our talent includes a deep bench of worldwide, industry-leading experts that acquire, process and evaluate aerial, terrestrial, and bathymetric lidar and survey data. Through that alignment we employ our own fleet of manned and unmanned aircraft and cutting-edge sensors for both public and private applications. Southern Mapping is proud to be part of this powerful geospatial team, applying a wealth of unparalleled services across the globe.



SOUTHERN MAPPING
A WOOLPERT COMPANY

www.southernmapping.com
+27 011 267 2609