

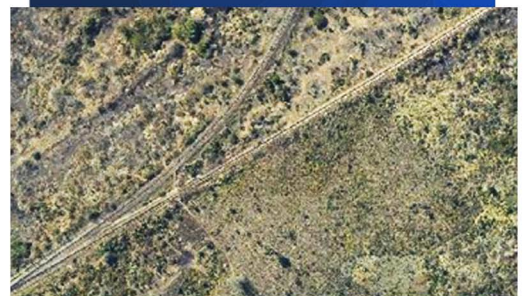
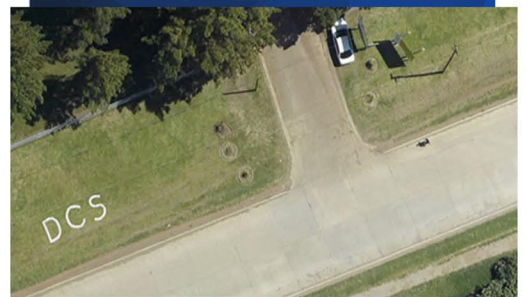
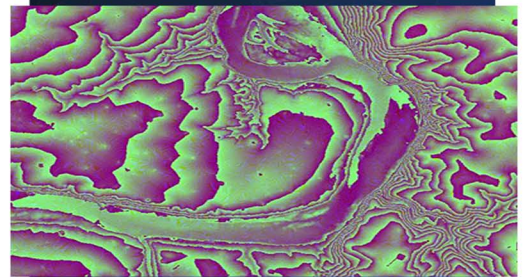


## Site and Corridor Selection

Initial site and corridor selections are best done using medium resolution data sets. These include elevation models, orthoimagery, geological, soil, vegetation, land cover, infrastructure, environmental, obstacle, building count and other types of information sets. Many of these information layers are available from Southern Mapping and can be supplied for input into your GIS or within a 3D interactive visualization tool that allows a virtual tour of an entire initial area or a number of corridor options.

## About Southern Mapping

Southern Mapping is based in Johannesburg, South Africa. Southern Mapping offers extensive high-accuracy lidar, imagery and remote sensing experience, as well as airborne topographic, hyperspectral, and thermal survey and mapping. We provide mapping services for engineering, infrastructure, mining, mapping, agriculture and environmental sectors in more than 45 African countries. Together with our parent company Woolpert, Inc., our talent includes a deep bench of worldwide, industry-leading experts that acquire, process and evaluate aerial, terrestrial, and bathymetric lidar and survey data. Through that alignment we employ our own fleet of manned and unmanned aircraft and cutting-edge sensors for both public and private applications. Southern Mapping is proud to be part of this powerful geospatial team, applying a wealth of unparalleled services across the globe.



**SOUTHERN MAPPING**

A WOOLPERT COMPANY

[www.southernmapping.com](http://www.southernmapping.com)

+27 011 267 2609