

Site Monitoring Solutions

Surface Movement Monitoring

There are many areas where small ground movements give early warning of possible failure due to previous underground mining or the development of sinkholes. Mines need to monitor faces and high walls for signs of slippage. On construction sites, landfills and terraces can subside or slip if they were not correctly constructed. Many of these sites are difficult or dangerous to access and a remote measurement technique is required. Southern Mapping provides a high resolution, broad area satellite radar solution that measures movements of less than 5mm between intervals as short as 11 days.

Site Progress Monitoring

Whether you are a construction company, a financier, a regulator, an insurer or an interested party, it is not possible to visit your sites of interest on a sufficiently regular basis to monitor the project progress and changes. Southern Mapping provides a solution that delivers an updated satellite image to your computer on a regular basis.

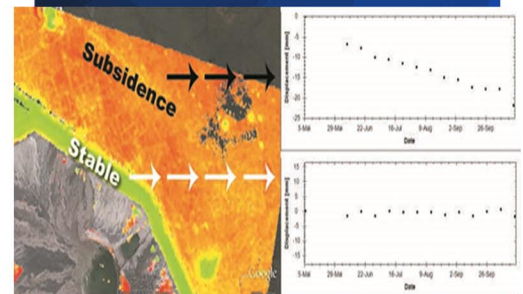
Vegetation Health Monitoring

Southern Mapping can provide early warning of changes to the health of vegetation at a site. There are many reasons for changes, including drought, pest infestation and pollution. On a site such as a mine or factory, this could indicate a leak in a tailings dam, storage facility or pipe. Early detection will help to mitigate the effects of such a leak.

All of the above results can be delivered as a simple image or as an interactive set of data and change depiction layers in our own web interface software. Alternatively we can provide the layers for import into your own software of choice.

About Southern Mapping

Southern Mapping is based in Johannesburg, South Africa. Southern Mapping offers extensive high-accuracy lidar, imagery and remote sensing experience, as well as airborne topographic, hyperspectral, and thermal survey and mapping. We provide mapping services for engineering, infrastructure, mining, mapping, agriculture and environmental sectors in more than 45 African countries. Together with our parent company Woolpert, Inc., our talent includes a deep bench of worldwide, industry-leading experts that acquire, process and evaluate aerial, terrestrial, and bathymetric lidar and survey data. Through that alignment we employ our own fleet of manned and unmanned aircraft and cutting-edge sensors for both public and private applications. Southern Mapping is proud to be part of this powerful geospatial team, applying a wealth of unparalleled services across the globe.



SOUTHERN MAPPING
A WOOLPERT COMPANY

www.southernmapping.com
+27 011 267 2609