

Satellite Imagery

We provide a wide range of cost-effective satellite imagery and digital elevation model (DEM) products through our relationships with a wide variety of satellite operators. This is well-suited for applications where high resolution is required for low cost, satellite derived image backdrops and satellite derived elevation model data. We can program satellite acquisitions for up-to-date imagery or offer cost effective data from our archives. Our ability to fuse imagery from different satellite sources allows us to provide sensor-independent, accurate, color-balanced, cloud-free mosaics at highly competitive rates.

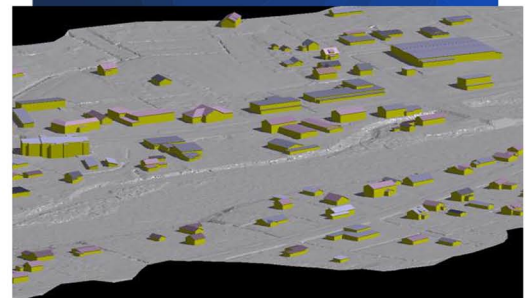
Southern Mapping satellite imagery data is available for regional coverages at 30m resolution, country coverages at 5m and project coverages at 50cm. We can also provide multispectral imagery spanning the visible near infrared wavelengths, suitable for vegetation monitoring and mineral exploration. Optical stereo imaging and radar satellites allow us to provide elevation model data and surface displacement monitoring. Satellite-derived DEM outputs are typically at 2-5m grid postings with better than 5m vertical accuracy. Displacement monitoring, which utilizes multitemporal radar imagery, allows for sub-centimeter movements to be measured.

About Southern Mapping

Southern Mapping, a Woolpert Company, is based in Johannesburg, South Africa. Southern Mapping offers extensive high-accuracy lidar, imagery and remote sensing experience, as well as airborne topographic, hyperspectral, and thermal survey and mapping. We provide mapping services for engineering, infrastructure, mining, mapping, agriculture and environmental sectors in more than 45 African countries. Together with our parent company, Woolpert, our talent includes a deep bench of worldwide, industry-leading experts that acquire, process and evaluate aerial, terrestrial, and bathymetric lidar and survey data. Through that alignment, we employ our own fleet of manned and unmanned aircraft and cutting-edge sensors for both public and private applications. Southern Mapping is proud to be part of this powerful geospatial team and apply a wealth of unparalleled services throughout Africa and across the globe.



Colour	Cell value	Class
Light Green	1	Geological Feature 1
Light Blue	2	Geological Feature 2
Light Purple	3	Geological Feature 3
Light Yellow	4	Geological Feature 4
Light Orange	5	Geological Feature 5
Light Red	6	Geological Feature 6
Light Green	7	Linear Geological Feature



SOUTHERN MAPPING
A WOOLPERT COMPANY

www.southernmapping.com
+27 011 267 2609