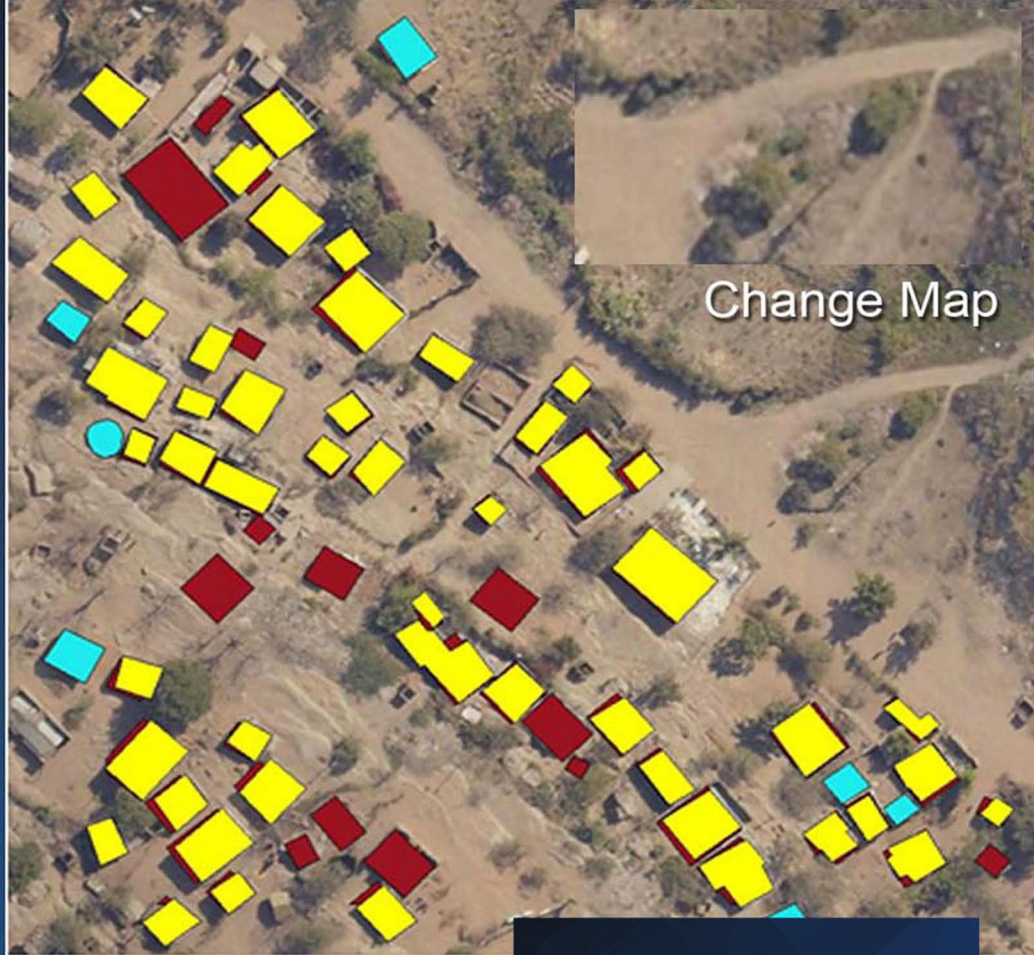


New Imagery



Change Map



Historic Imagery

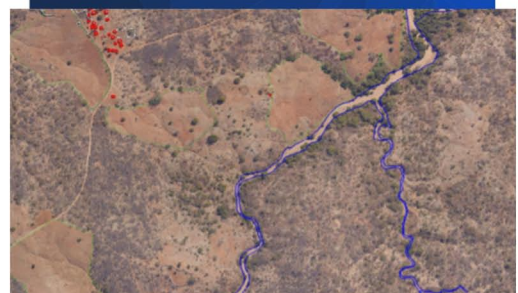


Precision Vector Mapping

Southern Mapping provides precision vector mapping from its highly accurate lidar and orthoimagery (up to 5cm absolute x, y, z accuracy and 5cm colour resolution) as well as satellite imagery (up to 50cm resolution). From land cover classification, to mandatory second schedule mine plans, we can provide precision quality vector outputs with rapid turnaround times. Vector data capture software allows for built-in quality assurance and ensures data precision. Multitempora vector mapping is also offered in the form of vector change maps particularly suited to infrastructure monitoring projects.

About Southern Mapping

Southern Mapping is based in Johannesburg, South Africa. Southern Mapping offers extensive high-accuracy lidar, imagery and remote sensing experience, as well as airborne topographic, hyperspectral, and thermal survey and mapping. We provide mapping services for engineering, infrastructure, mining, mapping, agriculture and environmental sectors in more than 45 African countries. Together with our parent company, Woolpert, our talent includes a deep bench of worldwide, industry-leading experts that acquire, process and evaluate aerial, terrestrial, and bathymetric lidar and survey data. Through that alignment, we employ our own fleet of manned and unmanned aircraft and cutting-edge sensors for both public and private applications. Southern Mapping is proud to be part of this powerful geospatial team and apply a wealth of unparalleled services throughout Africa and across the globe.



SOUTHERN MAPPING

A WOOLPERT COMPANY

www.southernmapping.com

+27 011 267 2609