

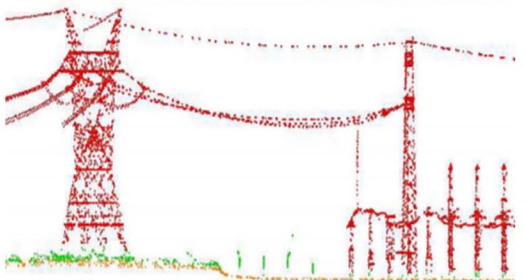
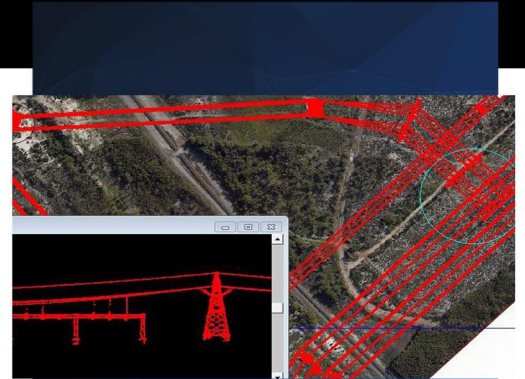
## Lidar for Power

Access to electricity is vital to sustain a quality of life. Companies are under pressure to deliver power to end users in greater quantities and at a greater speed than ever before. At the same time, it is becoming more difficult to find sites for power generation and routes for transmission lines. Lidar is the ideal technology to assist in relieving some of this pressure as it saves time and allows for easy access to a proposed site. Southern Mapping has surveyed power generation sites and power line routes worldwide. The results of these surveys are used for a variety of applications and include:

- Site selection, whether the source is hydro, coal or nuclear
- Infrastructure design on the final site, from supply of raw material to delivery of power
- Life cycle surveys for ongoing and maintenance
- Selection of the most appropriate transmission line corridor
- Profile survey of the final route
- Ampacity surveys on existing lines for power transmission optimization

## About Southern Mapping

Southern Mapping is based in Johannesburg, South Africa. Southern Mapping offers extensive high-accuracy lidar, imagery and remote sensing experience, as well as airborne topographic, hyperspectral, and thermal survey and mapping. We provide mapping services for engineering, infrastructure, mining, mapping, agriculture and environmental sectors in more than 45 African countries. Together with our parent company Woolpert, Inc., our talent includes a deep bench of worldwide, industry-leading experts that acquire, process and evaluate aerial, terrestrial, and bathymetric lidar and survey data. Through that alignment we employ our own fleet of manned and unmanned aircraft and cutting-edge sensors for both public and private applications. Southern Mapping is proud to be part of this powerful geospatial team, applying a wealth of unparalleled services across the globe.



**SOUTHERN MAPPING**

A WOOLPERT COMPANY

[www.southernmapping.com](http://www.southernmapping.com)

+27 011 267 2609