



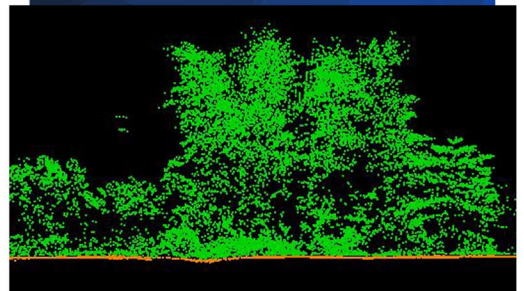
Infrastructure Design

An airborne lidar survey is the ideal way to capture the topographic information required by an engineer in order to design infrastructure, whether it be a new road, urban development, railway line, pipeline, power line or dam. In addition, any reticulation system can be designed using a broad area survey.

The lidar survey provides a highly detailed elevation model with densities of 1 to 20 points per square metre, depending on accuracy required. Each point is accurate in elevation better than 5cm, so the resultant surface is ideal for final design purposes. Lidar has an advantage over conventional aerial survey in that it can penetrate through vegetation and deliver an accurate ground level survey, even in the dense bush. This means that a design can begin long before any vegetation has been cleared and alternative routes can be evaluated at low cost and no impact on the ground.

About Southern Mapping

Southern Mapping, a Woolpert company, is based in Johannesburg, South Africa. Southern Mapping offers extensive high-accuracy lidar, imagery and remote sensing experience, as well as airborne topographic, hyperspectral, and thermal survey and mapping. We provide mapping services for engineering, infrastructure, mining, mapping, agriculture and environmental sectors in more than 45 African countries. Together with our parent company Woolpert, Inc., our talent includes a deep bench of worldwide, industry-leading experts that acquire, process and evaluate aerial, terrestrial, and bathymetric lidar and survey data. Through that alignment we employ our own fleet of manned and unmanned aircraft and cutting-edge sensors for both public and private applications. Southern Mapping is proud to be part of this powerful geospatial team, applying a wealth of unparalleled services across the globe.



SOUTHERN MAPPING
A WOOLPERT COMPANY

www.southernmapping.com
+27 011 267 2609