

## Hyperspectral Imaging

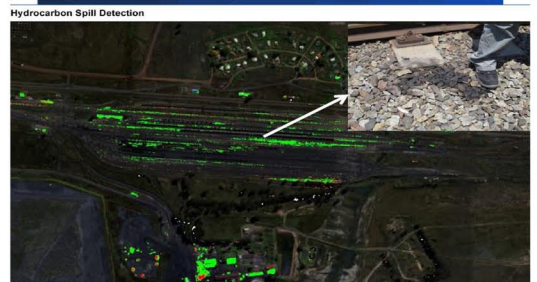
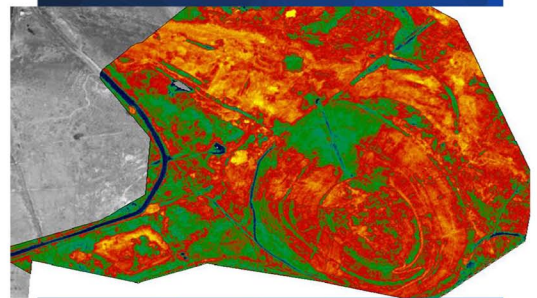
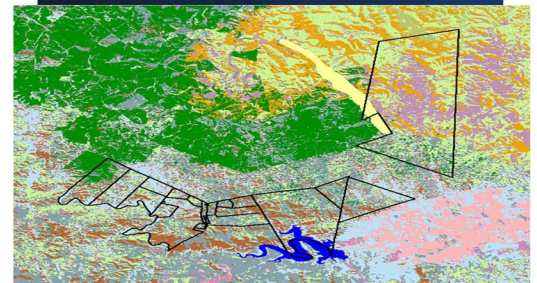
Southern Mapping is able to provide state-of-the-art airborne hyperspectral imaging. Using a state-of-the-art VNIR/SWIR hyperspectral camera, over 350 simultaneous images can be captured at up to 5nm bandwidth between 450nm to 2500nm. Images are converted from radiance to reflectance so that known mineral or vegetation spectra (from spectral libraries or collected in situ using a handheld spectrometer) can be correlated with the imagery.

Applications include:

- Baseline environmental auditing
- Detailed geological and targeted mineral mapping
- Mine rehabilitation monitoring
- Pollution point source identification and monitoring
- Hydrocarbon detection
- Vegetation species mapping
- Water quality (chlorophyll a and b and turbidity)

## About Southern Mapping

Southern Mapping is based in Johannesburg, South Africa. Southern Mapping offers extensive high-accuracy lidar, imagery and remote sensing experience, as well as airborne topographic, hyperspectral, and thermal survey and mapping. We provide mapping services for engineering, infrastructure, mining, mapping, agriculture and environmental sectors in more than 45 African countries. Together with our parent company Woolpert, Inc., our talent includes a deep bench of worldwide, industry-leading experts that acquire, process and evaluate aerial, terrestrial, and bathymetric lidar and survey data. Through that alignment we employ our own fleet of manned and unmanned aircraft and cutting-edge sensors for both public and private applications. Southern Mapping is proud to be part of this powerful geospatial team, applying a wealth of unparalleled services across the globe.



  
**SOUTHERN MAPPING**  
 A WOOLPERT COMPANY  
[www.southernmapping.com](http://www.southernmapping.com)  
 +27 011 267 2609